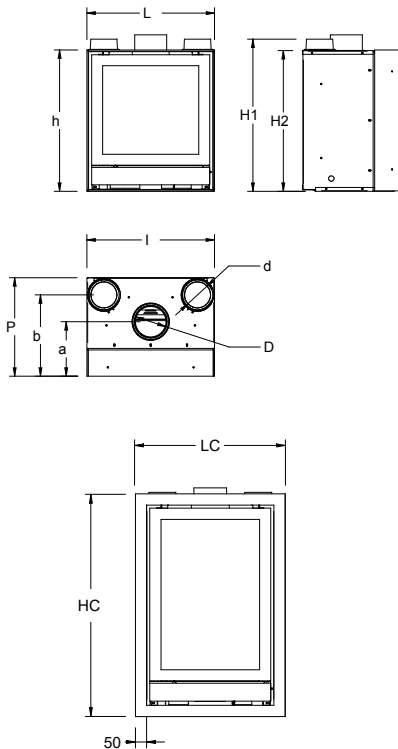


NIQ 43



FEATURES :

Built in steel
Woodbox® combustion technology
Cast iron interior
Cast iron door
Built-in blower
IR thermal self-cleaning ceramic glass
Ashpan
Primary and secondary air control
Optional remote control available
Optional finishing frame

DIMENSIONS WITH FINISHING FRAME :

	LC	HC
4-sides frame 50 mm.	776 mm.	750 mm.

TECHNICAL SPECIFICATIONS :

Ecolabel	A+
Min.-max. heat output	7-12 kW
Nominal heat output	9,5 kW
Heats up to	420 m3
Efficiency	80%
CO emissions	0,11 %
Flue diameter	150 mm.
Maximum log length	mm.
Weight	190 kg.
Certification	EN 13229
L	705 mm.
H1	792 mm.
H2	751 mm.
h	751 mm.
l	692 mm.
P	497 mm.
b	420 mm.
a	218 mm.
D	150 mm.
d	120 mm.