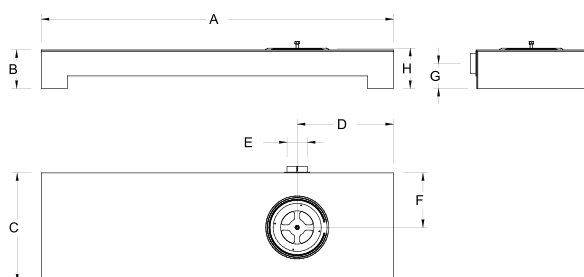
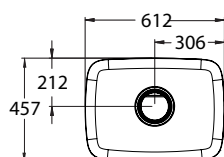
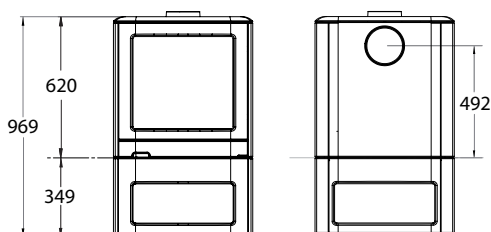


MQ 33



FEATURES :

Built in cast iron
Woodbox® combustion technology
360° rotating main body
Vermiculite interior
Top and rear flue connection
Outside air ready
IR thermal self-cleaning ceramic glass
Ashpan
Primary and secondary air control
Optional remote control available
2 stand options; cast iron log holder stand or steel bench (main body and stand sold separately)

BENCH DIMENSIONS :

A	B	C	D	E	F	G	H
1.700	186	528	465	100	264	120	194

TECHNICAL SPECIFICATIONS :

Ecolabel	A+
Min.-max. heat output	2-12 kW
Nominal heat output	5,2 kW
Heats up to	360 m ³
Side clearance to combustibles / non combustibles	350/50 mm.
Rear clearance to combustibles / non combustibles	400/75 mm.
Efficiency	82%
CO emissions	0,10%
Flue diameter	150 mm.
Maximum log length	400 mm.
Weight	209 kg.
Certification	EN 13240/16510